

Fundamental NCL Cruise Ship Dock Needs

- One Berth for a Breakaway Plus Class Ship – NCL Bliss
- Central Floating Pontoon for Safe Passenger Loading
- Vehicle and Pedestrian Accessible Bridge
- Adequate Mooring and Breasting Dolphins w/ Capstans
- Shore Tie Power to Ship
- Water, Sewer, Dock Operations Power and Lighting
- Suitable Uplands for Bus Parking & Passenger Circulation



In-Water Development

MRV
ARCHITECTS
ARCHITECTURE · PLANNING · INTERIORS

NCL NORWEGIAN
CRUISE LINE®

NCL Bliss – Ship Data



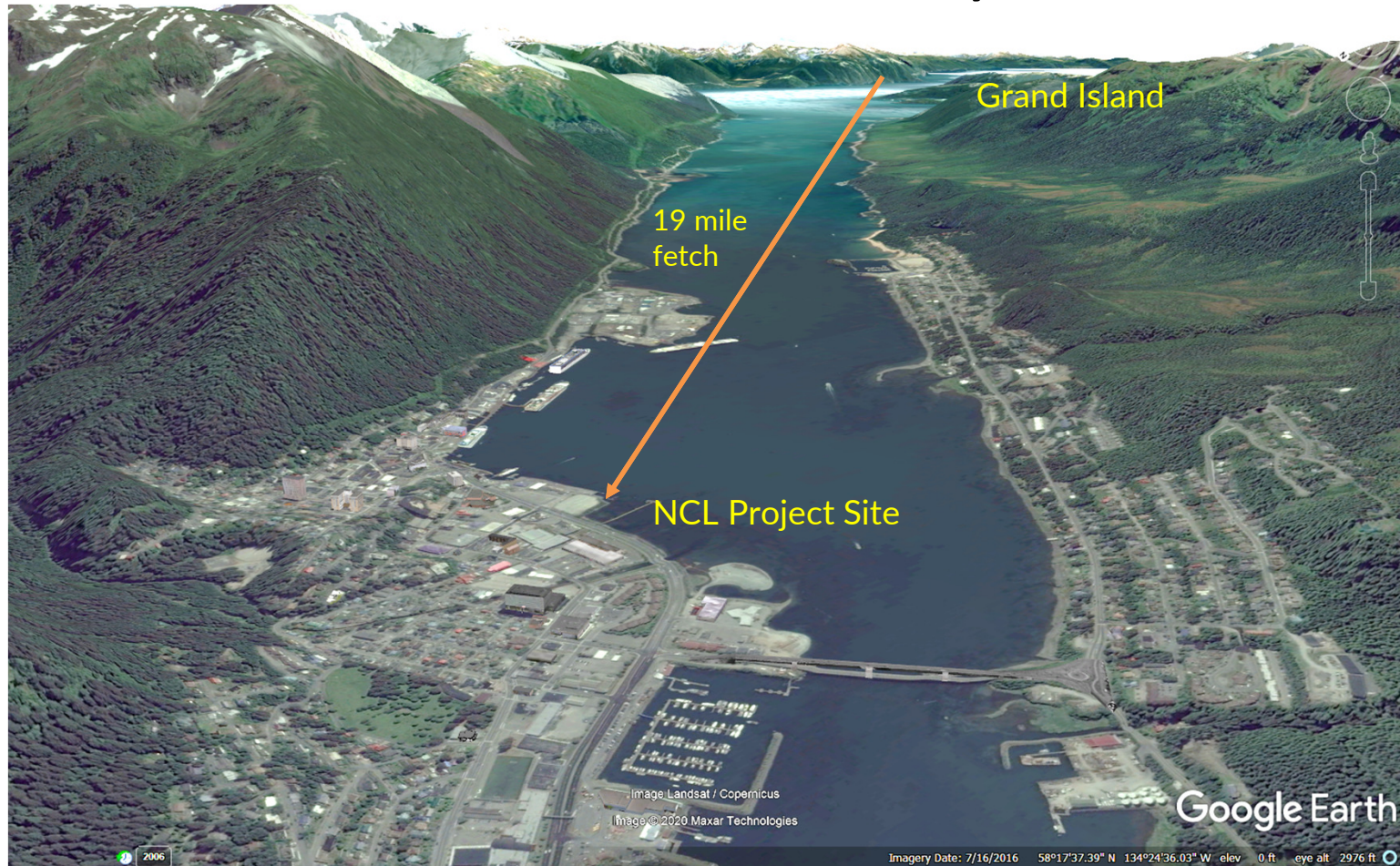
Year Built:	2018
Capacity:	4,004 Passengers
Crew Size:	1,716
Gross Tonnage:	168,028
Tons	
Vessel Water Draft:	28'
Length Overall:	1,094'
Moulded Breadth:	136'
Side Wind Area:	150,000 SF

In-Water Development

MRV
ARCHITECTS
ARCHITECTURE · PLANNING · INTERIORS

NCL NORWEGIAN
CRUISE LINE®

Met-Ocean Study



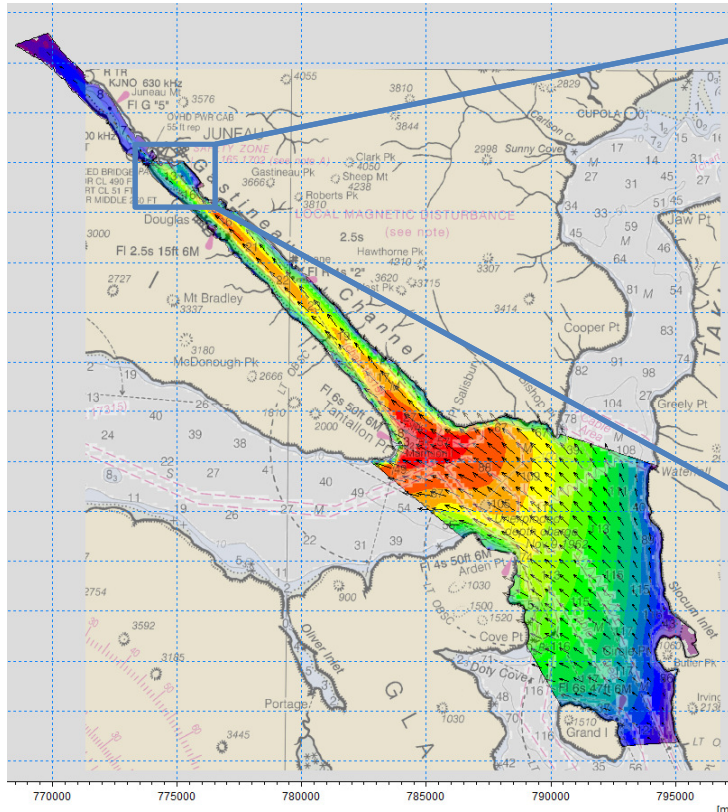
Oblique Aerial Image – Southeast Alignment of Gastineau Channel

In-Water Development

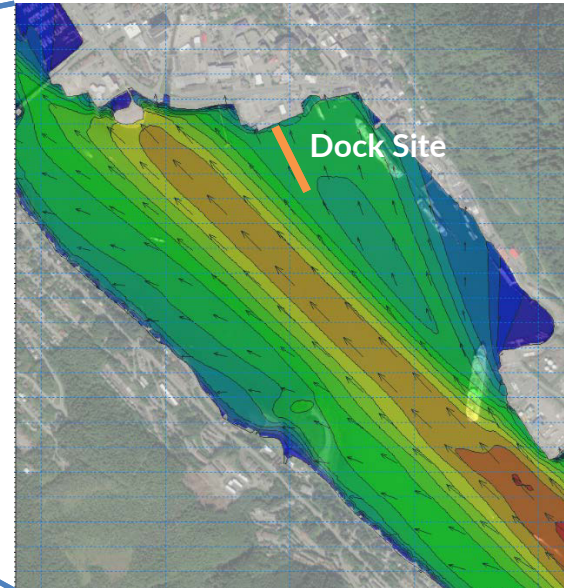
MRV
ARCHITECTS
ARCHITECTURE · PLANNING · INTERIORS

NCL NORWEGIAN
CRUISE LINE®

PND Met-Ocean Study



Wave Model Run – SE Direction



Design Environmental Conditions at Site

Extreme High Water:	+ 25' MLLW
Extreme Low Water:	- 6' MLLW
Max. Current:	1 Knot
Max. Wind Speed:	58 Knots
100 Yr. Significant Wave Ht.:	Hs = 4.3'

In-Water Development

MRV
ARCHITECTS
ARCHITECTURE · PLANNING · INTERIORS

NCL NORWEGIAN
CRUISE LINE®

NCL Cruise Ship Dock Concept – Vicinity View

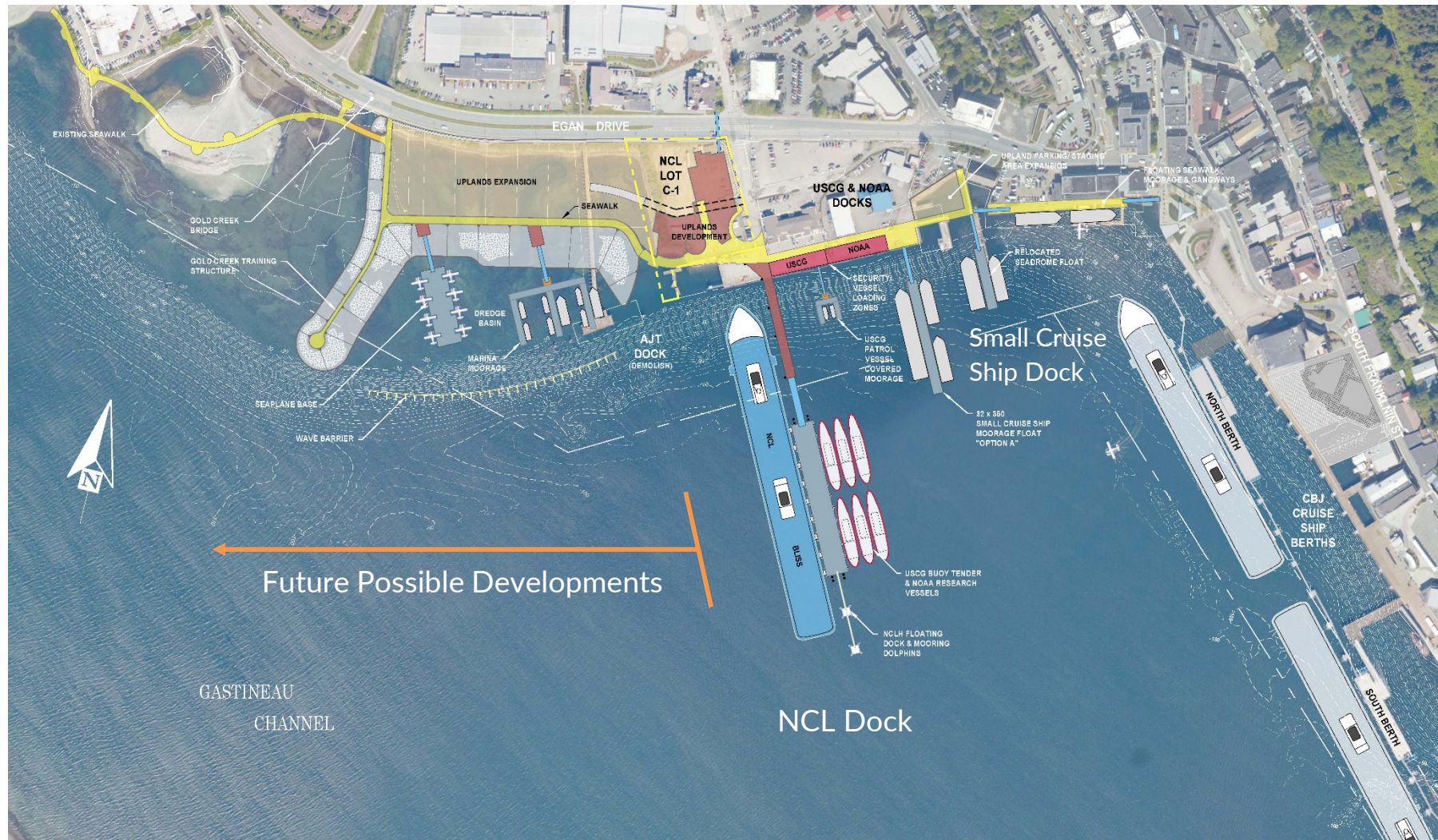


In-Water Development

MRV
ARCHITECTS
ARCHITECTURE · PLANNING · INTERIORS

NCL NORWEGIAN
CRUISE LINE®

NCL Cruise Ship Dock Concept - Enlarged View Community Minded Planning

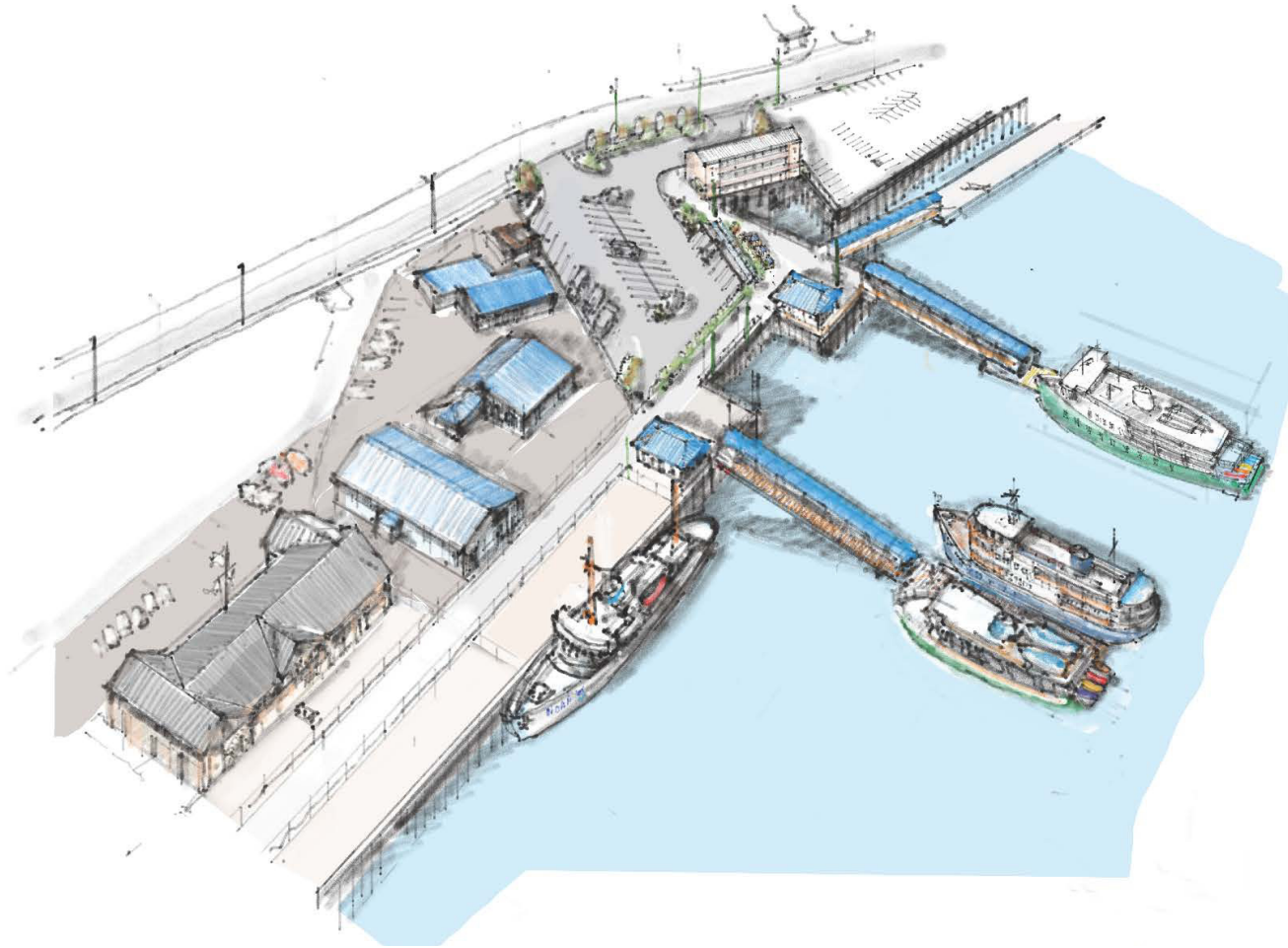


In-Water Development

MRV
ARCHITECTS
ARCHITECTURE · PLANNING · INTERIORS

NCL NORWEGIAN
CRUISE LINE®

CBJ Small Cruise Ship Dock – Preferred Plan



In-Water Development

MRV
ARCHITECTS
ARCHITECTURE · PLANNING · INTERIORS

NCL NORWEGIAN
CRUISE LINE®