



Navigational Evaluation of New Dock

- Impact on eliminating the anchoring of large ships in port
- Impacts on maneuvering of other vessels to and from port
- Mitigation of air pollution and navigational hazards
- Addressing permitting and detailed analysis going forward

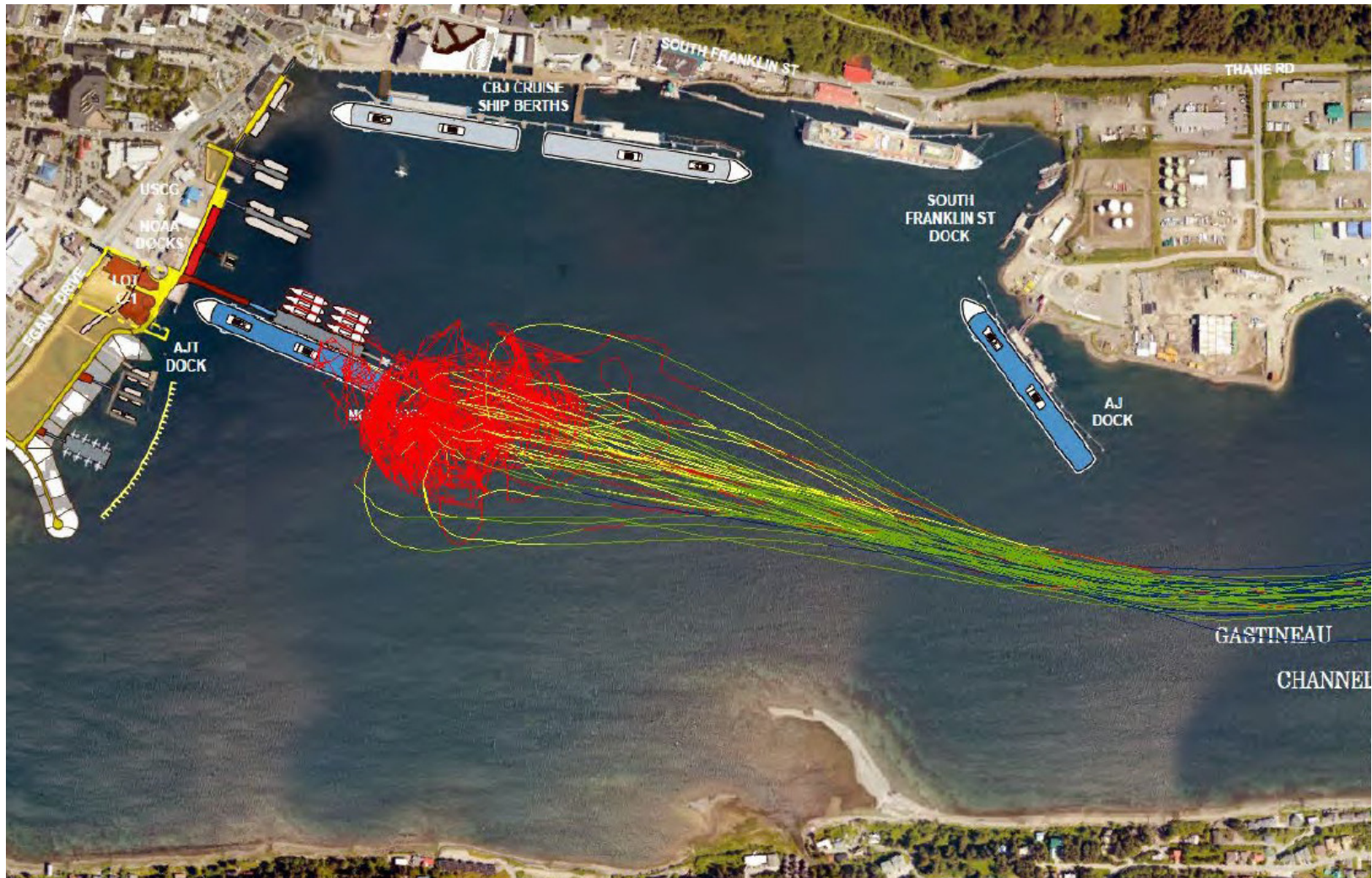


In-Water Development

MRV
ARCHITECTS
ARCHITECTURE · PLANNING · INTERIORS

NCL NORWEGIAN
CRUISE LINE®

Locations of Anchored Vessels



In-Water Development

MRV
ARCHITECTS
ARCHITECTURE · PLANNING · INTERIORS

NCL NORWEGIAN
CRUISE LINE®

Eliminating the Anchoring of Vessels

Reduce Physical Obstruction and Air Pollution



In-Water Development

MRV
ARCHITECTS
ARCHITECTURE · PLANNING · INTERIORS

NCL NORWEGIAN
CRUISE LINE®

Remove Hazard to Aircraft Presented by Anchored Vessels



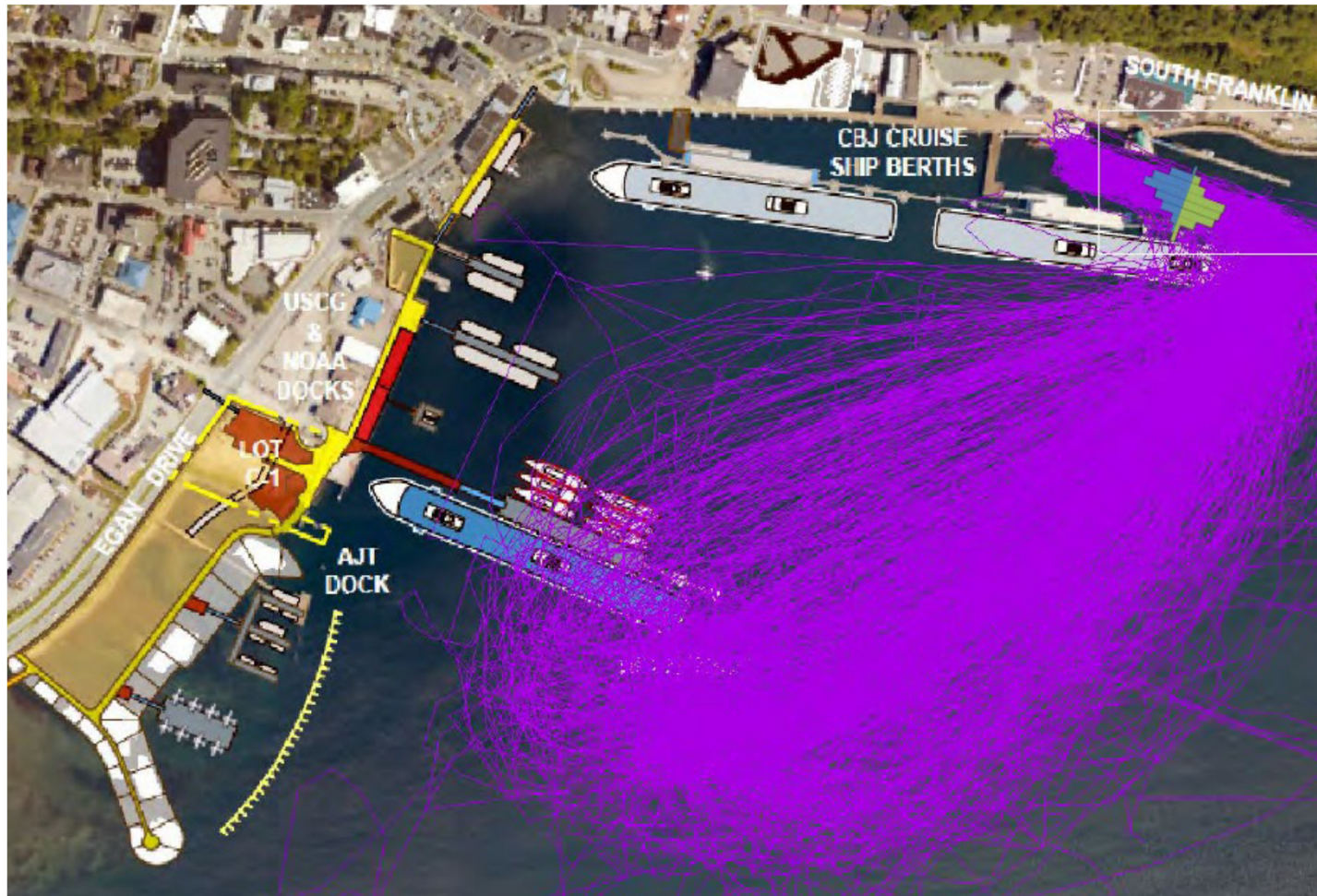
In-Water Development

MRV
ARCHITECTS
ARCHITECTURE · PLANNING · INTERIORS

NCL NORWEGIAN
CRUISE LINE®

800 Launch Transits from Anchored Vessels to Shore

Air Pollution and Hazard to Aircraft

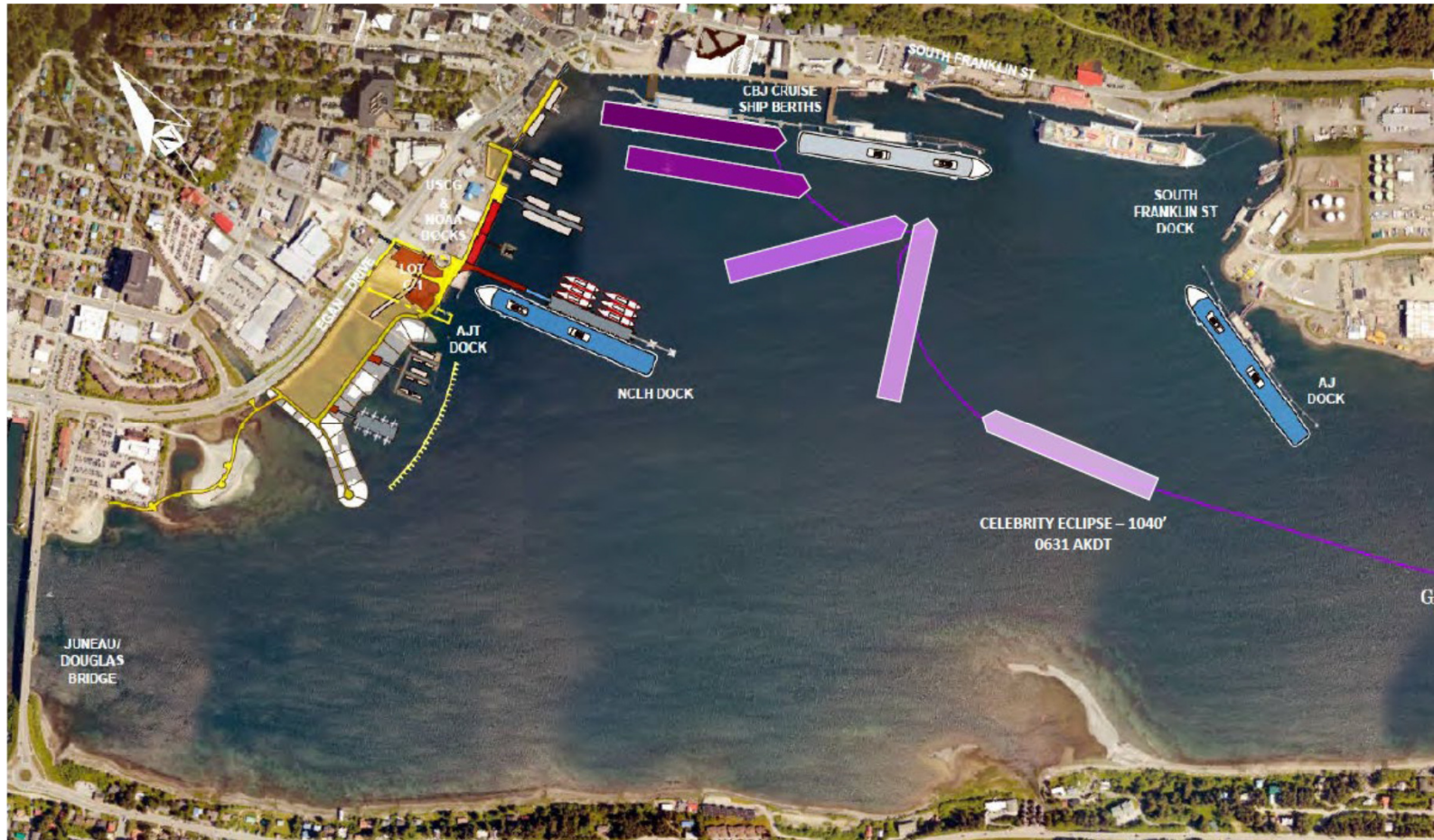


In-Water Development

MRV
ARCHITECTS
ARCHITECTURE · PLANNING · INTERIORS

NCL NORWEGIAN
CRUISE LINE®

Maneuvering to and from Nearby Docks

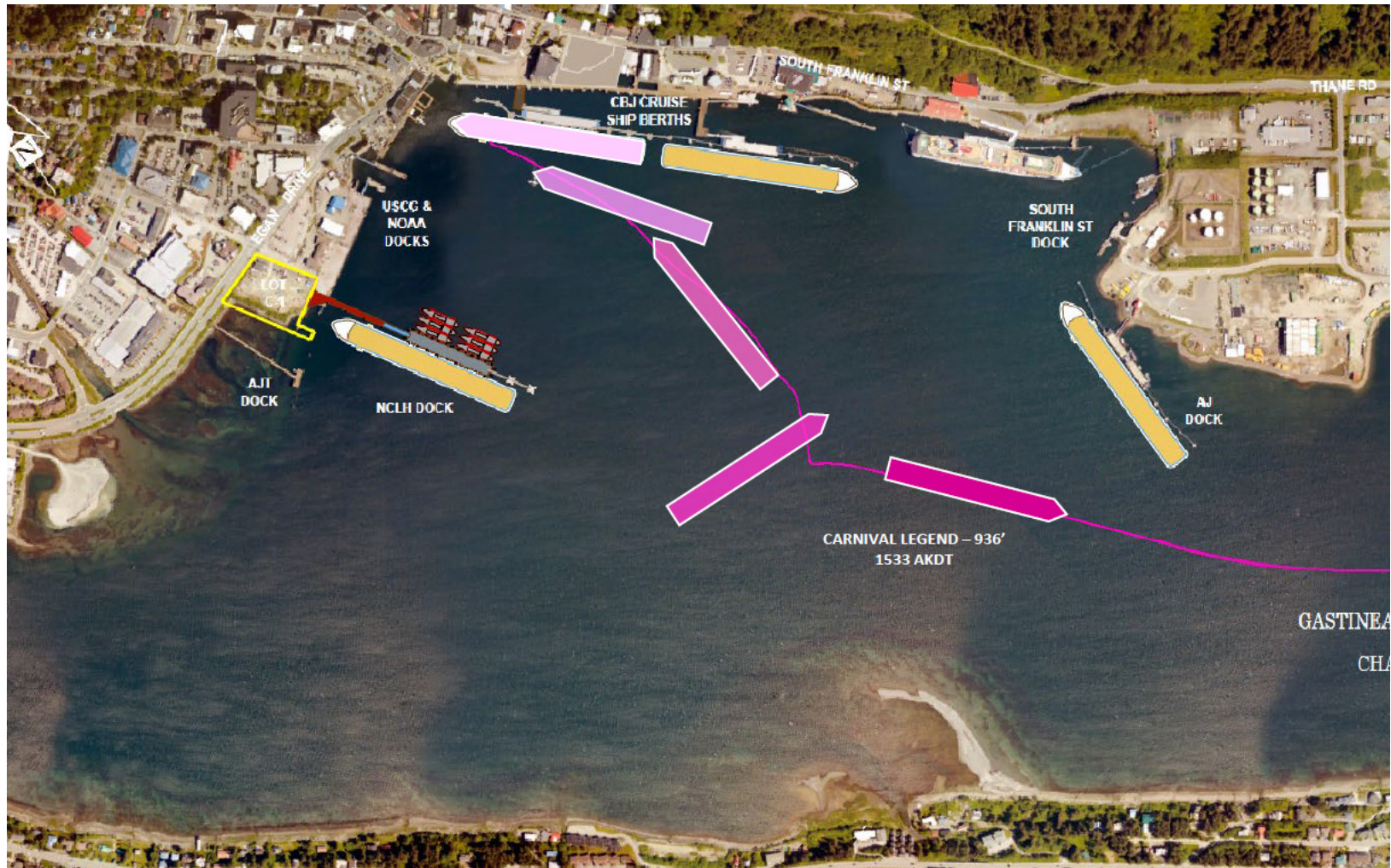


In-Water Development

MRV
ARCHITECTS
ARCHITECTURE · PLANNING · INTERIORS

NCL NORWEGIAN
CRUISE LINE®

Maneuvering to and from Nearby Docks



In-Water Development

MRV
ARCHITECTS
ARCHITECTURE · PLANNING · INTERIORS

NCL NORWEGIAN
CRUISE LINE®